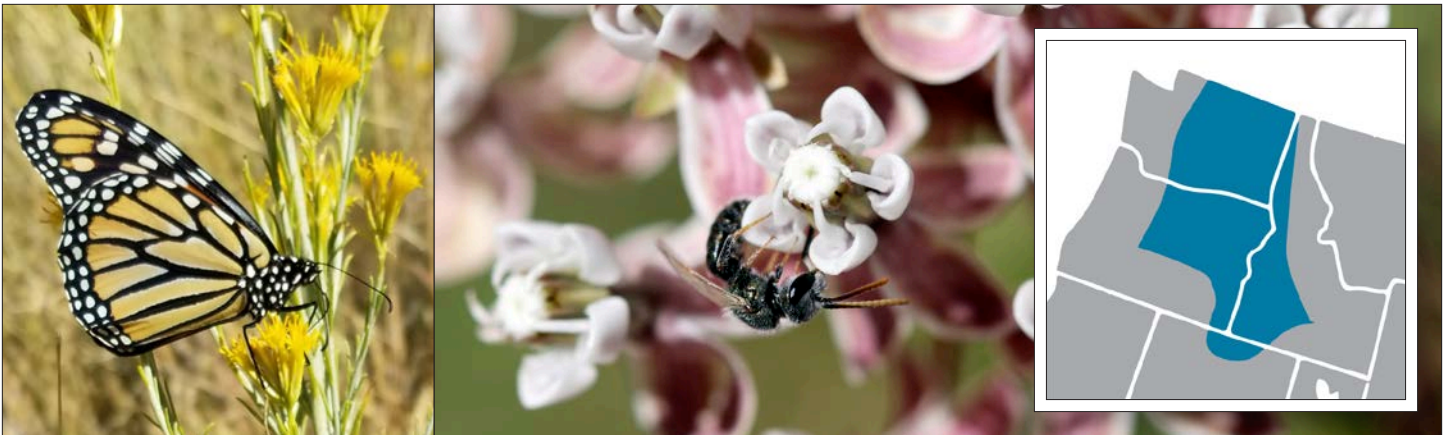


NATIVE PLANTS FOR POLLINATORS & BENEFICIAL INSECTS: Inland Northwest



LEFT—Monarch butterfly (*Danaus plexippus*) nectaring on *Ericameria nauseosa*. RIGHT—Tiny sweat bee on *Asclepias fascicularis*.

Plant Selection

These plants are attractive to a diversity of pollinators, providing pollen and nectar to bees, butterflies, flies, beetles, wasps, and moths. Some plants provide additional resources as caterpillar host plants or nesting sites and nesting materials for above-ground nesting bees. Many support specialist bees that require pollen from specific plants to survive and supplement beneficial insects that can help control pests of ornamental and crop plants. These plants are native to this region—determine if a species is native in your area at plants.usda.gov—and can be used to create or enhance pollinator habitat across rural and urban landscapes.

When purchasing plants, let your local garden center or nursery know you want plant material free of pesticides that may harm pollinators.

Resources

- ⇒ Pollinator Conservation Resource Center: xerces.org/pollinator-resource-center
- ⇒ Bring Back The Pollinators: BringBackthePollinators.org
- ⇒ Reducing Pesticide Use & Impacts: xerces.org/pesticides

| SCIENTIFIC NAME | COMMON NAME | BLOOM | LIFE | FORM | SUN | SOIL | ADDITIONAL DETAILS ① |
|--------------------------------------|--------------------------|---------|-------|------|-----|------|----------------------|
| <i>Achillea millefolium</i> | Common yarrow | MAY–JUL | P | | | D–M | |
| <i>Agastache urticifolia</i>★ | Nettleleaf giant hyssop | JUN–AUG | P | | | M | |
| <i>Allium cernuum</i> | Nodding onion | JUL–AUG | P | | | D | |
| <i>Amelanchier alnifolia</i>★ | Saskatoon serviceberry | JUN–JUL | P | | | D–M | |
| <i>Amsinckia menziesii</i> | Menzies' fiddleneck | APR–MAY | A | | | D | |
| <i>Asclepias fascicularis</i> | Mexican whorled milkweed | JUN–AUG | P | | | D–M | |
| <i>Asclepias speciosa</i> | Showy milkweed | MAY–SEP | P | | | M–W | |
| <i>Astragalus canadensis</i> | Canadian milkvetch | MAY–JUL | P | | | M | |
| <i>Balsamorhiza sagittata</i> | Arrowleaf balsamroot | MAY–JUN | P | | | D | |
| <i>Camassia quamash</i>★ | Small camas | APR–JUN | P | | | M–W | |
| <i>Ceanothus sanguineus</i> | Redstem ceanothus | APR–MAY | P | | | D–M | |
| <i>Chaenactis douglasii</i> | Douglas' dustymaiden | JUN–JUL | B / P | | | D | |

KEY LIFE: Annual Biennial Perennial SOIL: Dry Moist Wet ★ Staff favorite FORM: Forb Sedge Vine Cactus Shrub Grass Tree SUN: Full sun Partial sun Full shade ADD'L: Larval host (butterfly, moth) DETAILS: Supports specialist bee Attracts beneficial insects Bumble bee plant Nest site Nest thatch Deer resistant

Native Plants for Pollinators & Beneficial Insects: Inland Northwest *continued*

| SCIENTIFIC NAME | COMMON NAME | BLOOM | LIFE | FORM | SUN | SOIL | ADDITIONAL DETAILS ① |
|---|------------------------------|---------|-------|------|-----|------|----------------------|
| <i>Collomia grandiflora</i> | Grand collomia | JUN-JUL | A | | | D | |
| <i>Dalea ornata</i> | Blue Mountain prairie clover | MAY-JUL | P | | | D | |
| <i>Dasiphora fruticosa</i>★ | Shrubby cinquefoil | MAY-JUL | P | | | M-W | |
| <i>Dieteria canescens</i> | Hoary tansyaster | AUG-OCT | A / P | | | D | |
| <i>Ericameria nauseosa</i> | Rubber rabbitbrush | AUG-OCT | P | | | D | |
| <i>Erigeron speciosus</i> | Aspen fleabane | JUL-SEP | P | | | M | |
| <i>Eriogonum</i> spp. | Wild buckwheat | JUN-NOV | P | | | D | |
| <i>Eriophyllum lanatum</i> | Common woolly sunflower | MAY-AUG | A / P | | | D | |
| <i>Festuca idahoensis</i> | Idaho fescue | JUN-JUL | P | | | D | |
| <i>Gaillardia aristata</i>★ | Blanketflower | APR-MAY | P | | | D-M | |
| <i>Helianthus nuttallii</i> | Nuttall's sunflower | JUN-AUG | P | | | W | |
| <i>Heterotheca villosa</i> | Hairy false goldenaster | JUN-AUG | P | | | D | |
| <i>Koeleria macrantha</i> | Prairie Junegrass | MAY-JUN | P | | | D | |
| <i>Linum lewisii</i> | Lewis flax | MAY-SEP | P | | | D-M | |
| <i>Lomatium</i> spp. | Desert parsley | APR-JUN | P | | | D | |
| <i>Lupinus argenteus</i> | Silvery lupine | JUL-SEP | P | | | D | |
| <i>Lupinus sericeus</i> | Silky lupine | JUN-JUL | P | | | D | |
| <i>Mentzelia laevicaulis</i> | Smoothstem blazingstar | JUN-AUG | B / P | | | D | |
| <i>Monardella odoratissima</i> | Mountain monardella | JUN-AUG | P | | | D | |
| <i>Oenothera pallida</i> | Pale evening primrose | MAY-JUN | B / P | | | D | |
| <i>Penstemon speciosus</i>★ | Royal penstemon | JUN-AUG | P | | | D | |
| <i>Peritoma serrulata</i>★ | Rocky Mountain beeplant | JUN-JUL | A | | | D-M | |
| <i>Phacelia hastata</i> | Silverleaf phacelia | APR-MAY | P | | | D | |
| <i>Philadelphus lewisii</i> | Lewis' mock orange | MAY-JUN | P | | | D-M | |
| <i>Physocarpus malvaceus</i> | Mallow ninebark | MAY-JUN | P | | | D | |
| <i>Prunus virginiana</i> | Chokecherry | APR-MAY | P | | | M | |
| <i>Purshia tridentata</i> | Antelope bitterbrush | MAR-APR | P | | | D | |
| <i>Rhus glabra</i> | Smooth sumac | APR-MAY | P | | | D-M | |
| <i>Ribes aureum</i>★ | Golden currant | APR-MAY | P | | | M | |
| <i>Rosa woodsii</i>★ | Woods' rose | MAY-JUL | P | | | M | |
| <i>Rudbeckia occidentalis</i> | Western coneflower | JUL-OCT | P | | | M | |
| <i>Salix lasiolepis</i> | Arroyo willow | MAR-MAY | P | | | W | |
| <i>Salvia dorrii</i>★ | Purple sage | MAY-JUN | P | | | D | |
| <i>Sambucus nigra</i> ssp. <i>cerulea</i> | Blue elderberry | JUN-JUL | P | | | M | |
| <i>Sisyrinchium idahoense</i> | Idaho blue-eyed grass | APR-MAY | P | | | M-W | |
| <i>Solidago missouriensis</i>★ | Missouri goldenrod | JUL-SEP | P | | | D | |
| <i>Sphaeralcea munroana</i> | Munro's globemallow | APR-MAY | P | | | D | |
| <i>Symphotrichum</i> spp. | Asters | JUL-OCT | P / A | | | M-W | |

| | | | | | | | | | | | |
|------------|---------------------|------------------|-------------------------|-------------------|--------|-------------|-----------------------------|----------------------|---|------------------|----------------|
| KEY | LIFE: Annual | SOIL: Dry | ★ Staff favorite | FORM: Forb | Cactus | Shrub | Vine | SUN: Full sun | ADD'L: Larval host (butterfly, moth) | Bumble bee plant | Nest materials |
| | Biennial | Moist | | Cactus | Shrub | Partial sun | Supports specialist bee | Nest thatch | | | |
| | Perennial | Wet | | Grass | Tree | Full shade | Attracts beneficial insects | Nest site | | Deer resistant | |

Acknowledgments

This list was developed with funding from the Church and Dwight Philanthropic Foundation, CS Fund, Disney Conservation Fund, General Mills, Karyn & David Ries Charitable Fund, and USDA Natural Resources Conservation Service. **PHOTOS:** Xerces Society / Stephanie McKnight. For more information on installing pollinator habitat, see the list of Resources on front page.

We make the commitment to you that we will work every day to protect pollinators and their habitat. Will you support our work?
 Make a tax-deductible donation to the Xerces Society today! Visit xerces.org/donate to learn more.